



CHICAGO STAINLESS EQUIPMENT

INSTA-FLOW

# INDUSTRIAL STAINLESS STEEL PRESSURE GAUGES



All-Stainless Steel Construction



Quality Products Since 1937  
[www.chicagostainless.com](http://www.chicagostainless.com)

Member of:

**fisa**

Distributors Serving  
Sanitary Processing



CHICAGO STAINLESS EQUIPMENT, INC.

## INSTA-FLOW

# INDUSTRIAL STAINLESS STEEL PRESSURE GAUGES

Chicago Stainless has been a leading and innovative manufacturer of sanitary pressure gauges for more than seventy five years. We have taken this ¾ century of knowledge in the food processing, biopharmaceutical and chemical industries and applied it to produce an extremely durable yet accurate all stainless steel industrial pressure gauge. We offer this gauge with NPT connections in ranges from 30" Hg vacuum to 23,000 psi in either a 2½" (63mm) or 4" (100mm) dial face. Quality products, and service to back them up, are the keys to our success and yours.

### FEATURES

**316L Stainless Steel Construction** on all wetted surfaces assures maximum corrosion resistance.

**304 Stainless Steel Case** for durability even in the roughest environments.

**Waterproof Construction** throughout to allow the gauge to be submersed for cleaning.

**C.I.P.** - can be cleaned in place for convenience and eliminates the possibility of damage from mishandling.

**Pressure Ranges** from 30" Hg vacuum to 23,000 psi.

**True Zero** is standard on all gauges. The pointer is not pinned at zero and there is not a large zero block. This lets the operator know the pressure is truly zero and gives the most accurate pressure reading available.

**Re-zero Feature** is optional on all gauges.

**Glycerin Fill** is standard on all gauges unless requested otherwise. This protects the gear mechanism with continuous lubrication against vibration and wear caused by applications with vibration or pressure pulsations.

**140°F (60°C) Maximum process temperature** Please consult factory when ordering for higher temperature applications.

**Immediate Availability** from stock for most pressure gauges.

**Experienced Engineers** are available to answer questions and solve difficult application problems. Unparalleled Customer Service where the customer is always right and we are not happy until the customer is satisfied. No restocking charges and 30 day no-risk trials are always available.

### SPECIFICATIONS

Accuracy	±1.5% of Full Scale
Over Range Capability	30%
Wetted Surfaces	316L Stainless Steel
Case Material	304 Stainless Steel
Dial Sizes	2½"(63mm) or 4"(100mm) Dia.
Lens Material 2½"	Polycarbonate
Lens Material 4"	Safety Glass (Std)
Temp. Limits	-40°F (-40°C) to 140°F (60°C)*
Standard Fill	Food Grade Glycerin
Rezero Feature (on pointer)	Optional
Shipping Weight 2½"	Approx. 1 lbs (.5kg)
Shipping Weight 4"	Approx. 2 lbs (1kg)

\*For high temperature applications please consult factory.

### AVAILABLE RANGES (psi)

0 to 15psi	0 to 400 psi	30" to 0 psi
0 to 30 psi	0 to 600 psi	30" to 15 psi
0 to 60 psi	0 to 1,000 psi	30" to 30 psi
0 to 100 psi	0 to 3,000 psi	30" to 60 psi
0 to 160 psi	0 to 10,000 psi	30" to 100 psi
0 to 200 psi	0 to 14,500 psi (2½" only)	30" to 150 psi
0 to 300 psi	0 to 23,000 psi (2½" only)	

Standard scales are in PSI only, dual scale PSI-BAR, PSI-KG/cm<sup>2</sup>, metric and other scales available upon request.

### AVAILABLE FITTINGS

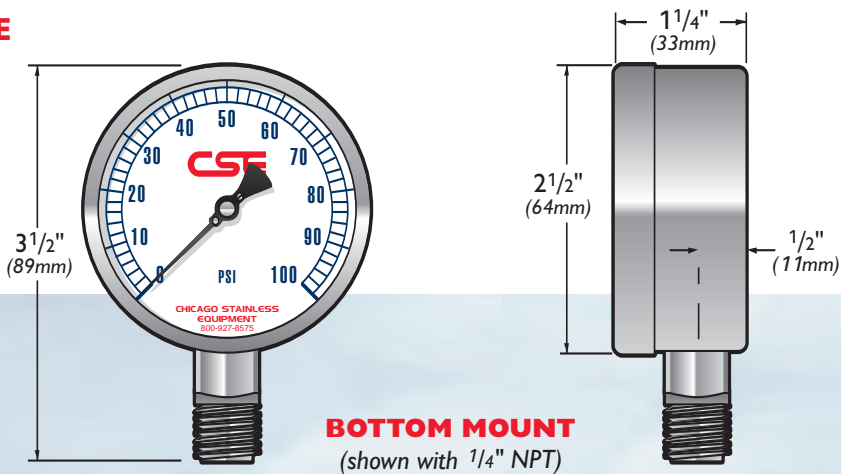
¼-18 NPT for 2½" (63mm).  
¼-18 NPT or ½-18 NPT for 4" (100mm).  
For other fittings please consult factory.

### AVAILABLE MOUNTINGS

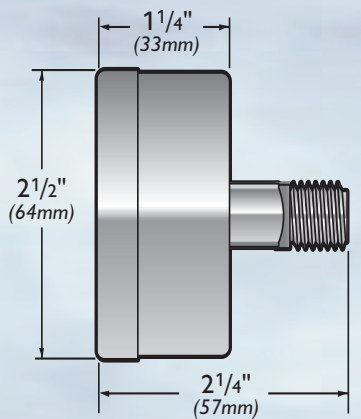
Bottom, Top, Left Side, Right Side and Back mount.



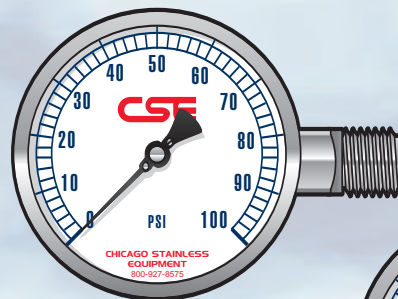
**2 1/2" GAUGE**  
(63mm)



**BOTTOM MOUNT**  
(shown with 1/4" NPT)



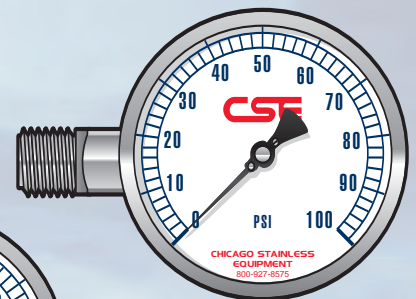
**BACK MOUNT**  
(shown with 1/4" NPT)



**RIGHT SIDE MOUNT**  
(shown with 1/4" NPT)

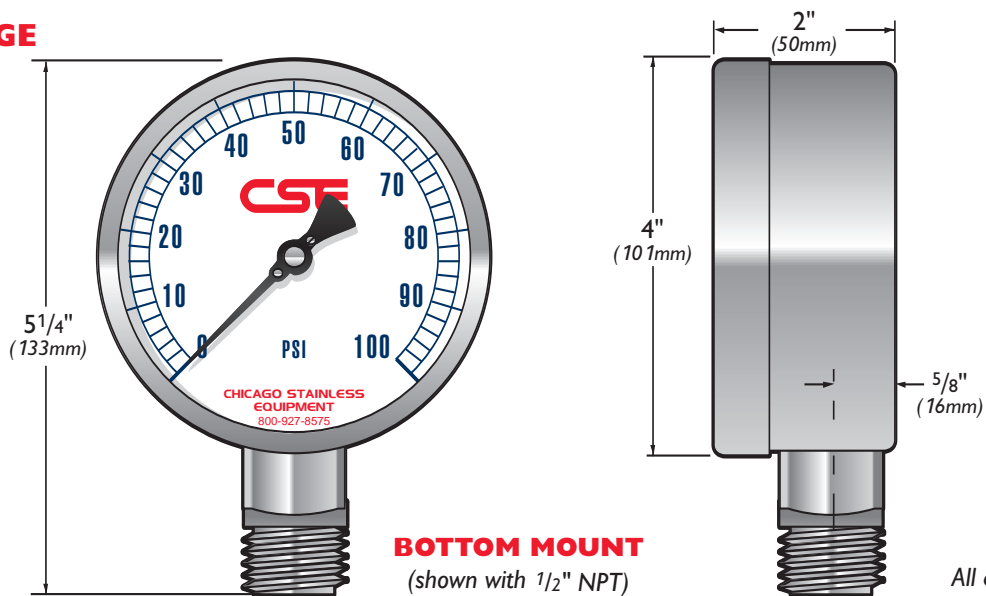


**TOP MOUNT**  
(shown with 1/4" NPT)



**LEFT SIDE MOUNT**  
(shown with 1/4" NPT)

**4" GAUGE**  
(100mm)



**BOTTOM MOUNT**  
(shown with 1/2" NPT)

All dimensions are approximate.





CHICAGO STAINLESS EQUIPMENT, INC.

## INSTA-FLOW

# INDUSTRIAL STAINLESS STEEL PRESSURE GAUGES ORDERING INFORMATION

Below are typical examples of models with their descriptions.

### EXAMPLE 1:

2N - E - 1/4 NPT-GF-BT  
Describes a 2 1/2" (63mm) Insta-Flow Pressure Gauge, 0 to 160 psi, 1/4" NPT fitting, glycerin filled case, bottom mounted.

### EXAMPLE 2:

2N - DB - 1/4 NPT-GF-BT  
Describes a 2 1/2" (63mm) Insta-Flow Pressure Gauge, 0 to 100 psi, 0 to 7 BAR, 1/4" NPT fitting, glycerin filled case, bottom mounted.

### EXAMPLE 3:

4N - E - 1/2 NPT-GF-BK  
Describes a 4" (100mm) Insta-Flow Pressure Gauge, 0 to 160 psi, 1/2" NPT fitting, glycerin filled case, back mounted.

### EXAMPLE 4:

4N - GB - 1/4 NPT-GF-RT  
Describes a 4" (100mm) Insta-Flow Pressure Gauge, 0 to 300 psi, 0 to 21 Kg/cm<sup>2</sup>, 1/4" NPT fitting, glycerin filled case, right side mounted.

### MODEL NUMBER CONSISTS OF:

**SERIES** - **PRESSURE RANGE** - **FITTING** - **FILLED CASE** - **MOUNT**  
**2N**                      **D**                      **1/4 NPT**                      **GF**                      **BT**

Please make a selection from each category below:

### SERIES

2N - 2 1/2" (63mm) Insta-Flow Gauge  
4N - 4" (100mm) Insta-Flow Gauge

### PRESSURE RANGE\*

A - 0 to 15 psi (1 BAR)  
B - 0 to 30 psi (2 BAR)  
C - 0 to 60 psi (4 BAR)  
D - 0 to 100 psi (7 BAR)  
E - 0 to 160 psi (11 BAR)  
F - 0 to 200 psi (14 BAR)  
G - 0 to 300 psi (21 BAR)  
H - 0 to 400 psi (28 BAR)  
I - 0 to 600 psi (41 BAR)  
K - 0 to 1,000 psi (70 BAR)  
U - 0 to 3,000 psi (210 BAR)  
V - 0 to 5,000 psi (350 BAR)  
W - 0 to 10,000 psi (700 BAR)  
14500 - 0 to 14,500 psi (1,00 BAR)\*\*  
23000 - 0 to 23,000 psi (1,600 BAR)\*\*  
J - 30" Hg to 0 psi (-1 to 0 BAR)  
L - 30" Hg to 15 psi (-1 to 1 BAR)  
M - 30" Hg to 30 psi (-1 to 2 BAR)  
N - 30" Hg to 60 psi (-1 to 4 BAR)  
O - 30" Hg to 100 psi (-1 to 7 BAR)  
P - 30" Hg to 150 psi (-1 to 10 BAR)

### FITTING

1/4 NPT - 1/4-18 Male Pipe Thread  
1/2 NPT - 1/2-18 Male Pipe Thread  
(4" dial size only)

### FILLED CASE

GF - Glycerin Filled  
SF - Silicone Filled  
NF - No Fill (Dry Case)  
04 - Other (Specify)

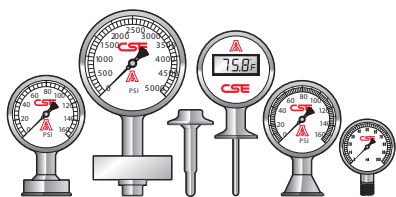
### MOUNT

BT - Bottom Mount  
BK - Back Mount  
TP - Top Mount  
RT - Right Side Mount  
LF - Left Side Mount

\* Standard scales are in PSI only. For dual scales, after the pressure range add letter B for PSI/BAR, K for PSI/Kg/cm<sup>2</sup>, P for PSI/KPa.

\*\* Available in 2 1/2" dial size only.

Visit our website or request a catalog to see our complete line of high quality, precision products including:  
Sani-Flow Pressure Gauges, Homogenizer Pressure Gauges, Industrial Stainless Steel Pressure Gauges, Digital Thermometers, Pharma-Flow Pressure Gauges, Chem-Flow Pressure Gauges and Thermowells.



**Quality Products Since 1937**  
[www.chicagostainless.com](http://www.chicagostainless.com)

### DISTRIBUTED BY:

For more information or for a distributor in your area, contact us:  
Chicago Stainless Equipment, Inc.  
772-781-1441  
[www.chicagostainless.com](http://www.chicagostainless.com)