



TT Series Thermostatic Steam Traps

All Stainless Steel

For Pressures to 300 psig (20 bar)...Capacities to 3,450 lb/hr (1,568 kg/hr)

Steam Trapping and Steam Tracing Equipment

Description

The balanced pressure bellows thermostatic steam trap has a sealed, stainless-steel body that is lightweight, compact and highly resistant to corrosion. The cage, bellows, valve and seat are all assembled into a precisely calibrated operating unit that ensures positive opening and closing action at slightly below steam temperature. The unique, stainless-steel construction is smaller and much lighter than comparable cast iron, brass or steel traps. TTF-1 is available with straight-thru or right angle connections. TT-2000 with the 360° universal stainless steel connector comes with either a standard connector or the IS-2 connector with integral strainer.

NOTE: Also can be used as a thermostatic air vent (Reference TTF Series Thermostatic Air Vents page AV-15).

Specification

Thermostatic steam trap, type ... in stainless steel.

How to Order

Specify:

- Model number
- Size and type of pipe connection
- Connector type (TT-2000)

Connections

1/2", 3/4" (15 mm, 20 mm)
1" (25 mm) IS-2 connector only
Socketweld

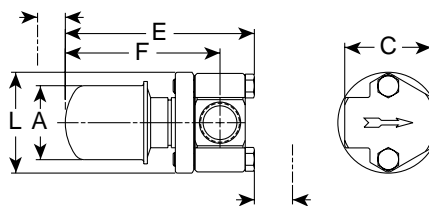
Materials

Body: 304L stainless steel
Connector: 304 stainless steel (TT-2000)
Bellows: Stainless steel and bronze with phosphor-bronze bellows, caged in stainless steel

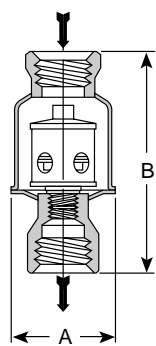
For a fully detailed certified drawing, refer to:
Standard Connector CD #1018 IS-2 Connector CD #1117



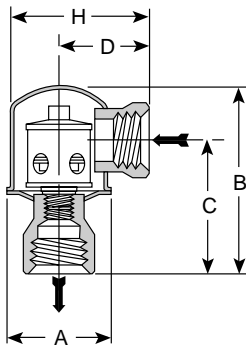
Model TT-2000 With Standard Connector



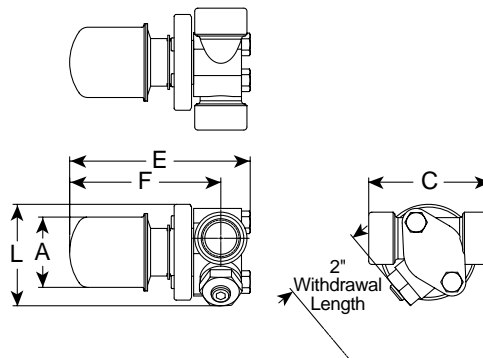
Model TT-2000 With Standard Connector



TTF-1 Trap



TTF-1R Trap



Model TT-2000 With IS-2 Connector With Integral Strainer

Model No.	TTF-1				TTF-1R				TT-2000					
	Straight-Thru Connections				Right-Angle Connections				Std. Connector		IS-2 Connector w/Integral Strainer			
	in	mm	in	mm	in	mm	in	mm	in	mm	in	mm	in	mm
Pipe Connections	1/2	15	3/4	20	1/2	15	3/4	20	1/2, 3/4	15, 20	1/2, 3/4	15, 20	1	25
"A" (Diameter)	2-1/4	57	2-1/4	57	2-1/4	57	2-1/4	57	2-1/4	57	2-1/4	57	2-1/4	57
"B" (Height)	4-1/2	114	4-11/16	119	3-3/4	95	3-15/16	100	—	—	—	—	—	—
"C" (Ø inlet to face of outlet)	—	—	—	—	2-5/8	67	2-13/16	71.4	2-3/8	60	3-1/2	89	4	102
"D" (Ø outlet to face of inlet)	—	—	—	—	1-15/16	49	1-7/8	48	1	25	—	—	—	—
"E" (Overall Length)	—	—	—	—	—	—	—	—	5-1/4	133	5-1/8	130	5-1/4	133
"F" (Ø to to Body End)	—	—	—	—	—	—	—	—	4-1/4	108	4-3/8	111	4-3/8	111
"G" (Face to Face)	—	—	—	—	—	—	—	—	2-3/8	60	3-1/2	89	4	102
"L" (Overall Height)	—	—	—	—	—	—	—	—	2-7/8	72	2-7/8	72	2-7/8	72
Blowdown Conn.	—	—	—	—	—	—	—	—	—	—	—	—	—	—
"H"	—	—	—	—	3-1/16	78	3	76	—	—	—	—	—	—
Weight lb (kg)	3/4 (0.4)		1 (0.5)		3/4 (0.4)		1 (0.5)		3-1/4 (1.5)		3.4 (7.5)			

All dimensions and weights are approximate. Use certified print for exact dimensions. Design and materials are subject to change without notice.

TT Series Thermostatic Steam Traps

All Stainless Steel

For Pressures to 300 psig (20 bar)...Capacities to 3,450 lb/hr (1,568 kg/hr)



Steam Trapping and
Steam Tracing Equipment

Model	TTF-1	TTF-1R	TT-2000
Design	Welded		
Connections	Screwed NPT and BSPT socketweld		
Material			
Body	ASTM A240—304L		
Valve	Bronze		
Seat	Stainless steel		
Thermostatic air vent	Standard stainless steel & bronze w/phosphor bronze bellows caged in stainless steel		
Optional: All stainless steel thermostatic air vent			
Connector			
Standard	—	—	Stainless steel—304
IS-2 w/integral strainer	—	—	Stainless steel—304 w/20x20 mesh 304 SS screen
Maximum Operating Conditions			
Maximum allowable pressure (vessel design)	300 psig @ 450°F (20 bar @ 232°C)		
Maximum operating pressure	300 psig (20 bar)		
Maximum operating temperature bellows	422°F (217°C)		

