



WELD FITTINGS....

Weld Fittings are used on permanent installations where process piping and equipment can be cleaned in place (CIP) and removal from the system is not required. Weld Fittings are offered in nominal tube sizes 1/2" through 8" in T304 and T316L materials. Uniform wall thickness for 1/2" through 3" sizes measure .065 (16 ga). In 4" size, wall thickness measures .083 (14 ga), 6" and 8" .109 (12 ga).

VNE offers Polished ID and OD Fittings for immediate shipment. Other polished combinations may be ordered. Our Weld Fittings meet all 3A requirements.

The "LA" designated product offering is available as a cost-effective alternative to our existing line of fittings and meets the industry expectations on high quality that you have come to expect from VNE. Fittings listed as [LA] are available in both our traditional offering and LA designated offering. Example: E2S-6L1.5 (Traditional offering on 3A weld by weld 316L stainless steel 90° elbow with tangents) and LA-E2S-6L1.5 (LA alternative on 3A weld by weld 316L stainless steel 90° elbow with tangents). Fittings listed as [LA ONLY] are products exclusive to the LA fitting product category.

WELD FITTING SPECIFICATIONS....

Size Range: 1/2" OD through 8" OD

Materials: T304
T316L

Finish: No. 7 - ID & OD
No. 5 - OD only
No. 3 - ID only
No. 1 - unpolished

ORDERING SPECIFICATIONS....

Specify:

- Quantity
- Product description or Part No.
- Size
- Material Type
- Polish Requirements

LIMITED WARRANTY....

VNE Corporation products are warranted to be free from defects in material and workmanship for a period of one year from the date of shipment. Any product that proves to be defective shall be repaired or replaced at the option of VNE, providing it has been used as recommended and in strict accordance with recognized piping practices, and that has not been subject to extraordinary service, such as encountered under severe corrosive or abrasive conditions.

VNE makes no warranties, express or implied, other than those listed above.

VNE shall not be liable for any consequential, indirect, incidental or contingent damages.

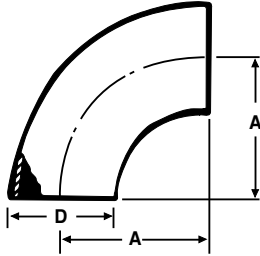


Industry Cross - Reference

WELD FITTINGS

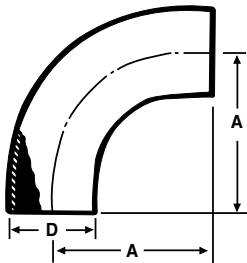
VNE	ALFA LAVAL	WAUKESHA / SPX	BRADFORD	STEEL & O'BRIEN
E2S	L2S	2CW	B2S	L2S
E2C	L2CM	2CKW	B2CM	L2CM
E2T	L2C	2TW	B2T	L2C
E2F	L2F	2FW	B2FP	L2F
E2KS	L2KS	2KW	B2KS	L2KS
E2KC	L2KM	2KKW	B2KM	L2KM
E2KT	L2K	2KT	B2K	L2K
E2KP	L2P	2KP	B2P	L2P
E2WU	L2WU	2WU	B2WUL	2WU
E7WWW	L7WWW	7W	B7WWW	7WWW
E7WWC	L7WWM	7WWK	B7WWM	7WWM
E7WWT	L7WWT	7WWT	B7WWT	----
E7WCW	L7WMW	7WKW	B7WMW	7WMW
E7WTW	L7WTW	7WTW	B7WTW	----
E7WCC	L7WMM	7WKK	B7WMM	7WMM
E7WTT	L7WTT	7WTT	B7WTT	----
E7CCW	L7MMW	7KKW	B7MMW	7MMW
E7TTW	L7TTW	7TTW	B7TTW	----
E7RWWW	L7RWWW	7WR	B7RWWW	7WR
E9WWWWW	L9WWWWW	9W	B9WWWWW	9WWWWW
E31WW	L31	31W	B31W	31W
E32WW	L32	32W	B32W	32W
E28WA	L28WA	28WA	B28WA	28WA
E28WB	L28WB	28WB	B28W	28WB
E2WK			B2WK	2WK

2WCL / LA-2WCL - 90° ELBOW SHORT TANGENT



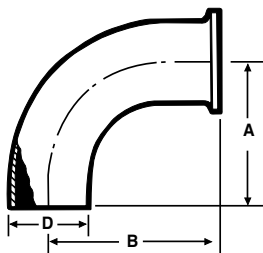
	Size Tube OD	A	D	Nom. Wall
[LA]	1	1.500	1.000	0.065
[LA]	1 1/4	1.875	1.250	0.065
[LA]	1 1/2	2.250	1.500	0.065
[LA]	2	3.000	2.000	0.065
[LA]	2 1/2	3.750	2.500	0.065
[LA]	3	4.500	3.000	0.065
[LA]	4	6.000	4.000	0.083
	6	9.000	6.000	0.109
	8	12.000	8.000	0.109

E2S / LA-E2S - 90° ELBOW



	Size Tube OD	A	D	Nom. Wall
[LA]	1	2.062	1.000	0.065
[LA]	1 1/2	2.937	1.500	0.065
[LA]	2	4.062	2.000	0.065
[LA]	2 1/2	5.187	2.500	0.065
[LA]	3	6.312	3.000	0.065
[LA]	4	8.312	4.000	0.083

E2C / LA-E2C - 90° ELBOW

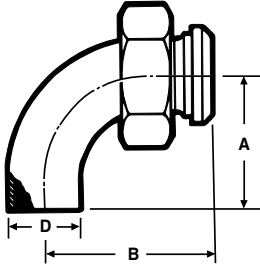


	Size Tube OD	A	B	D	Nom. Wall
[LA]	1	2.062	2.562	1.000	0.065
[LA]	1 1/2	2.935	3.437	1.500	0.065
[LA]	2	4.062	4.562	2.000	0.065
[LA]	2 1/2	5.187	5.687	2.500	0.065
[LA]	3	6.312	6.812	3.000	0.065
[LA]	4	8.312	8.937	4.000	0.083
[LA]	6	9.000	9.875	6.000	0.109

Weld Fittings

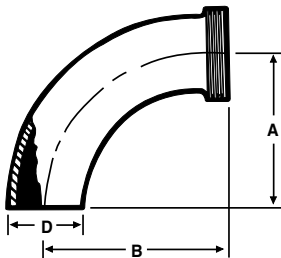
STAINLESS STEEL FITTINGS PRODUCT CATALOG

E2F - 90° ELBOW



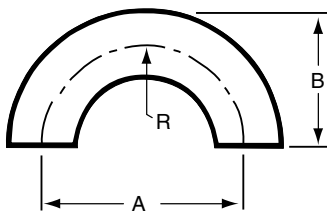
Size Tube OD	A	B	D	Nom. Wall
1	2.062	2.750	1.000	0.065
1 1/2	2.937	3.656	1.500	0.065
2	4.062	4.781	2.000	0.065
2 1/2	5.187	6.031	2.500	0.065
3	6.937	7.218	3.000	0.065
4	8.937	9.531	4.000	0.083

E2T - 90° ELBOW



Size Tube OD	A	B	D	Nom. Wall
1	2.062	2.750	1.000	0.065
1 1/2	2.937	3.656	1.500	0.065
2	4.062	4.781	2.000	0.065
2 1/2	5.187	6.031	2.500	0.065
3	6.937	7.218	3.000	0.065
4	8.937	9.531	4.000	0.083

E2WU - 180° U BEND

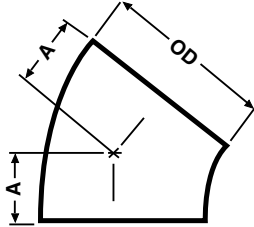


Size Tube OD	A	B	C	R	Nom. Wall
1/2	1.500	1.000	0.500	0.750	0.065
3/4	2.250	1.500	0.750	1.125	0.065
1	3.000	2.000	1.000	1.500	0.065
1 1/4	3.750	2.500	1.250	1.875	0.065
1 1/2	4.500	3.000	1.500	2.250	0.065
2	6.000	4.000	2.000	3.000	0.065
2 1/2	7.500	5.000	2.500	3.750	0.065
3	9.000	6.000	3.000	4.500	0.065
4	12.000	8.000	4.000	6.000	0.083
6	18.000	12.000	6.000	9.000	0.109

Weld Fittings

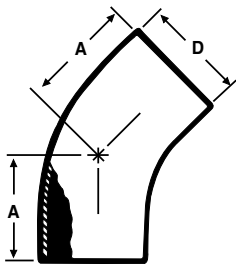
STAINLESS STEEL FITTINGS PRODUCT CATALOG

E2WK / LA-E2WK - 45° ELBOW SHORT TANGENT



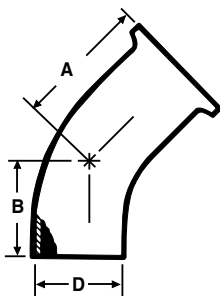
	Size Tube OD	A	Nom. Wal
[LA]	1	0.625	0.065
[LA]	1 1/4	0.781	0.065
[LA]	1 1/2	0.937	0.065
[LA]	2	1.250	0.065
[LA]	2 1/2	1.562	0.065
[LA]	3	1.875	0.065
[LA]	4	2.500	0.083
[LA]	6	3.750	0.109
[LA]	8	5.000	0.109

E2KS / LA-E2KS - 45° ELBOW



	Size Tube OD	A	D	Nom. Wall
[LA]	1	1.187	1.000	0.065
[LA]	1 1/2	1.625	1.500	0.065
[LA]	2	2.312	2.000	0.065
[LA]	2 1/2	3.000	2.500	0.065
[LA]	3	3.687	3.000	0.065
[LA]	4	4.812	4.000	0.083

E2KC - 45° ELBOW

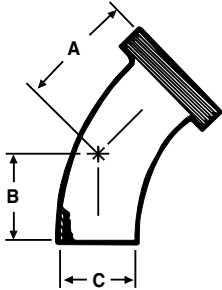


	Size Tube OD	A	B	D	Nom. Wall
	1	1.687	1.187	1.000	0.065
	1 1/2	2.125	1.625	1.500	0.065
	2	2.812	2.312	2.000	0.065
	2 1/2	3.500	3.000	2.500	0.065
	3	4.187	3.687	3.000	0.065
	4	5.437	4.812	4.000	0.083
	6	4.625	3.750	6.000	0.109

Weld Fittings

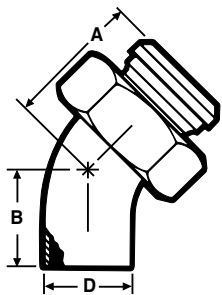
STAINLESS STEEL FITTINGS PRODUCT CATALOG

E2KT - 45° ELBOW



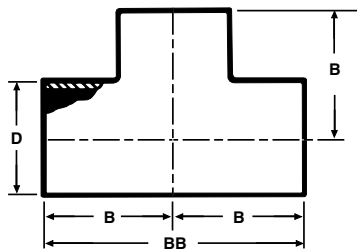
Size Tube OD	A	B	C	Nom. Wall
1	1.875	1.187	1.000	0.065
1 1/2	2.343	1.625	1.500	0.065
2	3.031	2.312	2.000	0.065
2 1/2	3.843	3.000	2.500	0.065
3	4.593	3.687	3.000	0.065
4	6.031	4.812	4.000	0.083

E2KP - 45° ELBOW



Size Tube OD	A	B	D	Nom. Wall
1	1.875	1.187	1.000	0.065
1 1/2	2.343	1.625	1.500	0.065
2	3.031	2.312	2.000	0.065
2 1/2	3.843	3.000	2.500	0.065
3	4.593	3.687	3.000	0.065
4	6.031	4.812	4.000	0.083

E7WWW / LA-E7WWW - TEE

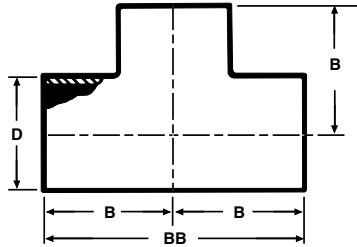


Size Tube OD	B	BB	D	Nom. Wall
[LA] 1	1.125	2.250	1.000	0.065
[LA] 1 1/4	2.250	3.312	1.250	0.065
[LA] 1 1/2	1.656	3.312	1.500	0.065
[LA] 2	2.062	4.125	2.000	0.065
[LA] 2 1/2	2.343	4.687	2.500	0.065
[LA] 3	2.593	5.187	3.000	0.065
[LA] 4	3.437	6.875	4.000	0.083
6	5.625	11.250	6.000	0.109
8	7.000	14.000	8.000	0.109

Weld Fittings

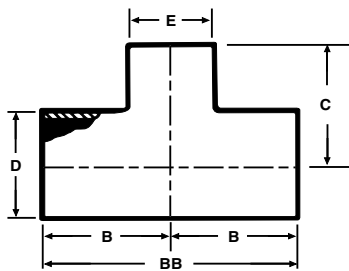
STAINLESS STEEL FITTINGS PRODUCT CATALOG

LA-E7W - LONG TEE - ONLY AVAILABLE IN LA



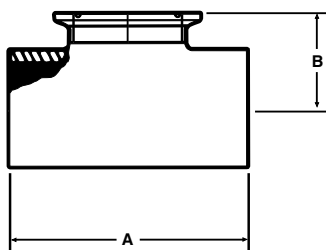
Size Tube OD	B	BB	D	Nom. Wall
1/2	1.875	3.750	0.500	0.065
3/4	2.000	4.000	0.750	0.065
1	1.875	3.750	1.000	0.065
1 1/2	2.250	4.500	1.500	0.065
2	3.000	6.000	2.000	0.065
2 1/2	3.000	6.000	2.500	0.065
3	3.250	6.500	3.000	0.065
4	5.875	7.750	4.000	0.083

E7RWWW / LA-E7RWWW - REDUCING TEE



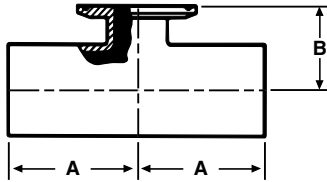
Size Tube OD	B	BB	C	Nom. Wall
[LA] 1 1/2 x 1	1.650	3.312	1.375	0.065
[LA] 2 x 1	2.060	4.125	1.625	0.065
[LA] 2 x 1 1/2	2.060	4.125	1.906	0.065
[LA] 2 1/2 x 1	2.340	4.687	1.875	0.065
[LA] 2 1/2 x 1 1/2	2.340	4.687	2.150	0.065
[LA] 2 1/2 x 2	2.340	4.687	2.312	0.065
[LA] 3 x 1	2.590	5.187	2.125	0.065
[LA] 3 x 1 1/2	2.590	5.187	2.400	0.065
[LA] 3 x 2	2.590	5.187	2.562	0.065
[LA] 3 X 2 1/2	2.590	5.187	2.590	0.065
[LA] 4 x 1 1/2	3.430	6.875	4.906	0.083 x 0.065
[LA] 4 x 2	3.430	6.875	3.090	0.083 x 0.065
[LA] 4 x 2 1/2	3.430	6.875	3.090	0.083 x 0.065
[LA] 4 x 3	3.590	6.875	3.090	0.083 x 0.065
[LA] 6 x 2	5.625	11.250	5.625	0.109 x 0.065
[LA] 6 x 3	5.625	11.250	5.625	0.109 x 0.065
6 x 4	5.625	11.250	5.625	0.109 x 0.083

E7WWCS - SHORT CLAMP BRANCH TEE - See TE7WWCS



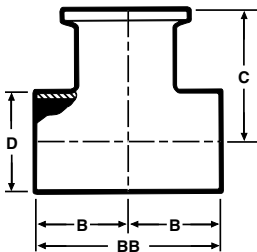
Size Tube OD	A	B	Nom. Wall
1	4.250	1.125	.065
1 1/2	4.750	1.375	.065
2	5.750	1.625	.065
2 1/2	6.250	1.875	.065
3	6.750	2.125	.065
4	8.250	2.750	.083
6	11.250	4.625	.109

E7RWWCS - REDUCING SHORT CLAMP BRANCH TEE



Size Tube OD	A	B	Nom. Wall
3/4 x 1/2	2.000	1.000	0.065
1 x 1/2	2.120	1.120	0.065
1 x 3/4	2.120	1.120	0.065
1 1/2 x 1/2	2.370	1.370	0.065
1 1/2 x 3/4	2.370	1.370	0.065
1 1/2 x 1	2.370	1.370	0.065
2 x 1/2	2.870	1.620	0.065
2 x 3/4	2.870	1.620	0.065
2 x 1	2.870	1.620	0.065
2 x 1 1/2	2.870	1.620	0.065
2 1/2 x 1/2	3.120	1.870	0.065
2 1/2 x 3/4	3.120	1.870	0.065
2 1/2 x 1	3.120	1.870	0.065
2 1/2 x 1 1/2	3.120	1.870	0.065
2 1/2 x 2	3.120	1.870	0.065
3 x 1/2	3.370	2.120	0.065
3 x 3/4	3.370	2.120	0.065
3 x 1	3.370	2.120	0.065
3 x 1 1/2	3.370	2.120	0.065
3 x 2	3.370	2.120	0.065
3 x 2 1/2	3.370	2.120	0.065
4 x 1/2	4.120	2.620	0.083
4 x 3/4	4.120	2.620	0.083
4 x 1	4.120	2.620	0.083
4 x 1 1/2	4.120	2.620	0.083
4 x 2	4.120	2.620	0.083
4 x 2 1/2	4.120	2.620	0.083
4 x 3	4.120	2.620	0.083
6 x 4	5.630	3.750	0.109

E7WWC - TEE WELD X WELD X CLAMP

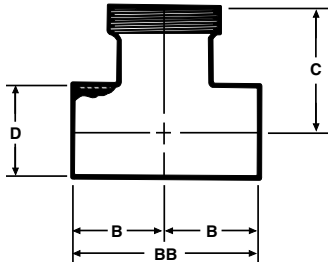


Size Tube OD	B	BB	C	D	Nom. Wall
1	1.125	2.250	1.625	1.000	0.065
1 1/2	1.656	3.312	2.156	1.500	0.065
2	2.062	4.125	2.562	2.000	0.065
2 1/2	2.343	4.687	2.843	2.500	0.065
3	2.593	5.187	3.093	3.000	0.065
4	3.625	7.250	4.656	4.000	0.083
6	5.625	11.250	6.500	6.000	0.109

Weld Fittings

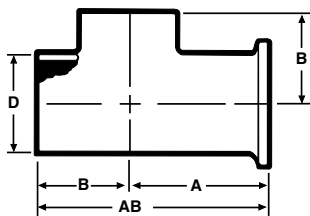
STAINLESS STEEL FITTINGS PRODUCT CATALOG

E7WWT - TEE WELD X WELD X THREAD



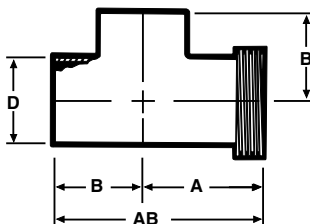
Size Tube OD	B	BB	C	D	Nom. Wall
1	1.125	2.250	1.812	1.000	0.065
1 1/2	1.656	3.312	2.375	1.500	0.065
2	2.062	4.125	2.781	2.000	0.065
2 1/2	2.343	4.687	3.187	2.500	0.065
3	2.593	5.187	3.500	3.000	0.065
4	3.625	7.250	4.656	4.000	0.083

E7WCW - TEE WELD X CLAMP X WELD



Size Tube OD	A	B	AB	D	Nom. Wall
1	1.625	1.125	2.750	1.000	0.065
1 1/2	2.156	1.656	3.812	1.500	0.065
2	2.562	2.062	4.625	2.000	0.065
2 1/2	2.843	2.343	5.187	2.500	0.065
3	3.093	2.593	5.687	3.000	0.065
4	4.250	3.625	7.875	4.000	0.083
6	6.500	5.625	12.125	6.000	0.109

E7WTW - TEE THREADED ONE END - WELD X THREAD X WELD

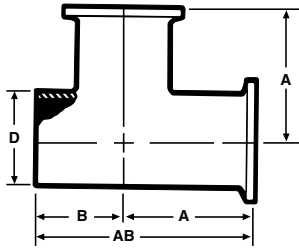


Size Tube OD	A	B	AB	D	Nom. Wall
1	1.812	1.125	2.937	1.000	0.065
1 1/2	2.375	1.656	4.031	1.500	0.065
2	2.781	2.062	4.843	2.000	0.065
2 1/2	3.187	2.343	5.531	2.500	0.065
3	3.500	2.593	6.093	3.000	0.065
4	4.656	3.625	8.281	4.000	0.083

Weld Fittings

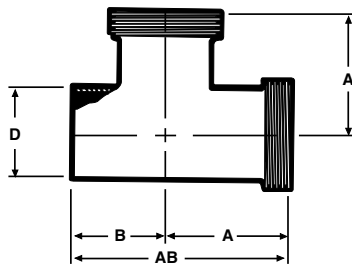
STAINLESS STEEL FITTINGS PRODUCT CATALOG

E7WCC - TEE WELD X CLAMP X CLAMP



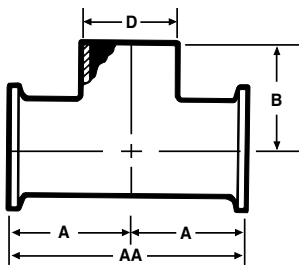
Size Tube OD	A	B	AB	D	Nom. Wall
1	1.625	1.125	2.750	1.000	0.065
1 1/2	2.156	1.656	3.812	1.500	0.065
2	2.562	2.062	4.625	2.000	0.065
2 1/2	2.843	2.343	5.187	2.500	0.065
3	3.093	2.593	5.687	3.000	0.065
4	4.250	3.625	7.875	4.000	0.083
6	6.500	5.625	12.125	6.000	0.109

E7WTT - TEE WELD X THREAD X THREAD



Size Tube OD	A	B	AB	D	Nom. Wall
1	1.812	1.125	2.937	1.000	0.065
1 1/2	2.375	1.656	4.031	1.500	0.065
2	2.781	2.062	4.843	2.000	0.065
2 1/2	3.187	2.343	5.531	2.500	0.065
3	3.500	2.593	6.093	3.000	0.065
4	4.656	3.625	8.281	4.000	0.083

E7CCW - TEE CLAMP X CLAMP X WELD

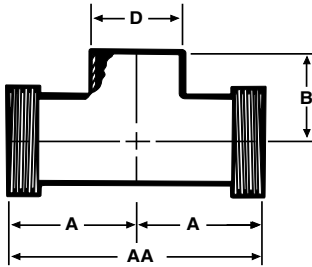


Size Tube OD	A	AA	B	D	Nom. Wall
1	1.625	3.250	1.125	1.000	0.065
1 1/2	2.562	4.312	1.656	1.500	0.065
2	2.562	5.125	2.062	2.000	0.065
2 1/2	2.843	5.687	2.343	2.500	0.065
3	3.093	6.187	2.593	3.000	0.065
4	4.250	8.500	3.625	4.000	0.083
6	6.500	13.000	5.625	6.000	0.109

Weld Fittings

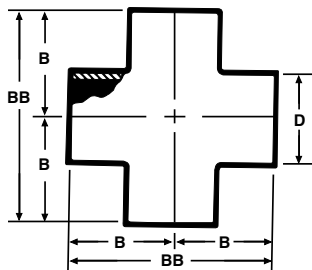
STAINLESS STEEL FITTINGS PRODUCT CATALOG

E7TTW - TEE THREAD X THREAD X WELD



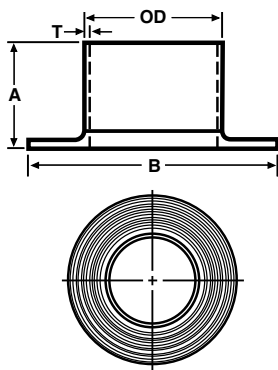
Size Tube OD	A	AA	B	D	Nom. Wall
1	1.812	3.625	1.125	1.000	0.065
1 1/2	2.375	4.750	1.656	1.500	0.065
2	2.781	5.562	2.062	2.000	0.065
2 1/2	3.187	6.375	2.343	2.500	0.065
3	3.500	7.000	2.593	3.000	0.065
4	4.656	9.312	3.625	4.000	0.083

E9WWW - CROSS / LA-E9WWW - CROSS



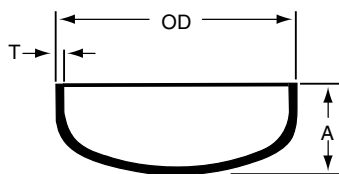
Size Tube OD	B	BB	D	Nom. Wall
[LA] 1	1.125	2.250	1.000	0.065
[LA] 1 1/2	1.656	3.312	1.500	0.065
[LA] 2	2.062	4.125	2.000	0.065
[LA] 2 1/2	2.343	4.687	2.500	0.065
[LA] 3	2.593	5.187	3.000	0.065
[LA] 4	3.437	6.875	4.000	0.083
6	5.625	11.250	6.000	0.109

E14WA - TYPE A STUB END WITH GROOVES



Size Tube OD	A	B	Nom. Wall (T)
1/2	1.375	1.625	0.065
3/4	1.375	1.687	0.065
1	1.625	2.000	0.065
1 1/4	1.625	2.500	0.065
1 1/2	1.750	2.875	0.065
2	1.500	3.625	0.065
2 1/2	2.000	4.125	0.065
3	2.250	5.000	0.065
4	2.625	6.187	0.083
6	3.000	8.500	0.109

E16W - WELD CAP

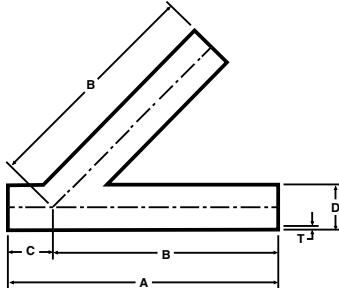


Size Tube OD	A	Nom. Wall (T)
1	0.375	0.065
1 1/4	0.500	0.065
1 1/2	0.562	0.065
2	0.750	0.065
2 1/2	1.000	0.065
3	1.250	0.065
4	1.500	0.083
6	Contact VNE for dimensions	

Weld Fittings

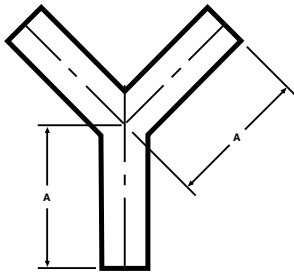
STAINLESS STEEL FITTINGS PRODUCT CATALOG

E28WA - 45° LATERAL



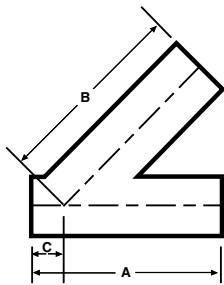
Size Tube OD	A	B	C	D	Nom. Wall (T)
1	6.000	5.000	1.000	1.000	0.065
1 1/2	7.375	6.187	1.187	1.500	0.065
2	8.625	7.125	1.500	2.000	0.065
2 1/2	10.125	8.500	1.625	2.500	0.065
3	10.750	8.875	1.875	3.000	0.065
4	12.812	10.750	2.062	4.000	0.083
6	18.000	14.500	3.500	6.000	0.109

E28WB - TRUE Y



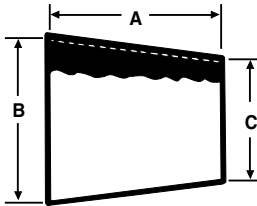
Size Tube OD	A	Nom. Wall
1	3.000	0.065
1 1/2	3.000	0.065
2	4.000	0.065
2 1/2	5.000	0.065
3	6.000	0.065
4	8.000	0.083
6	8.000	0.109

E28RWA - 45° REDUCING LATERAL



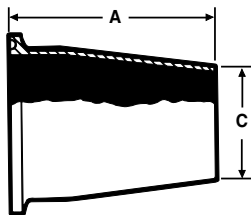
Size Tube OD	A	B	C	Nom. Wall
1 1/2 x 1	7.375	6.187	1.187	0.065
2 x 1	8.625	7.125	1.625	0.065
2 x 1 1/2	8.625	7.125	1.625	0.065
2 1/2 x 1	10.125	8.500	1.500	0.065
2 1/2 x 1 1/2	10.125	8.500	1.500	0.065
2 1/2 x 2	10.125	8.500	1.500	0.065
3 x 1	10.750	8.875	1.875	0.065
3 x 1 1/2	10.750	8.875	1.875	0.065
3 x 2	10.750	8.875	1.875	0.065
3 x 2 1/2	10.750	8.875	1.875	0.065
4 x 1	12.812	10.750	2.062	0.083 x .065
4 x 1 1/2	12.812	10.750	2.062	0.083 x .065
4 x 2	12.812	10.750	2.062	0.083 x .065
4 x 2 1/2	12.812	10.750	2.062	0.083 x .065
4 x 3	12.812	10.750	2.062	0.083 x .065

E31WW - CONCENTRIC REDUCER / LA-E31WW - CONCENTRIC REDUCER



	Size Tube OD	A	B	C	Nom. Wall
[LA]	3/4 x 1/2	*	0.750	0.500	0.065
[LA]	1 x 1/2	*	1.000	0.500	0.065
[LA ONLY]	1 x 1/2 x 2.0	2.000	1.000	0.500	0.065
[LA]	1 x 3/4	*	1.000	0.750	0.065
[LA]	1 1/2 x 1/2	*	1.500	0.500	0.065
[LA ONLY]	1 1/2 x 1/2 x 2.0	2.000	1.500	0.500	0.065
[LA]	1 1/2 x 3/4	*	1.500	0.750	0.065
[LA]	1 1/2 x 1	2.000	1.500	1.000	0.065
[LA]	1 1/2 x 1 1/4	1.000	1.500	1.250	0.065
[LA]	2 x 1	4.000	2.000	1.000	0.065
	2 x 1 1/4	3.000	2.000	1.250	0.065
[LA]	2 x 1 1/2	2.000	2.000	1.500	0.065
[LA ONLY]	2 1/2 x 1	6.000	2.500	1.000	0.065
[LA]	2 1/2 x 1 1/2	4.000	2.500	1.500	0.065
[LA]	2 1/2 x 2	2.000	2.500	2.000	0.065
[LA ONLY]	3 x 1	8.000	3.000	1.000	0.065
[LA]	3 x 1 1/2	6.000	3.000	1.500	0.065
[LA]	3 x 2	4.000	3.000	2.000	0.065
[LA]	3 x 2 1/2	2.000	3.000	2.500	0.065
[LA ONLY]	4 x 1	12.000	4.000	1.000	0.083 x .065
[LA ONLY]	4 x 1 1/2	10.000	4.000	1.500	0.083 x .065
[LA]	4 x 2	8.000	4.000	2.000	0.083 x .065
[LA]	4 x 2 1/2	6.000	4.000	2.500	0.083 x .065
[LA]	4 x 3	4.000	4.000	3.000	0.083 x .065
	6 x 2	5.500	6.000	2.000	0.109 x .065
	6 x 3	5.500	6.000	3.000	0.109 x .083
	6 x 4	5.500	6.000	4.000	0.109 x .083

E31CW - CONCENTRIC REDUCER CLAMP X WELD

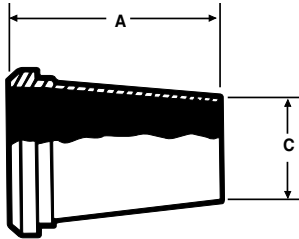


	Size Tube OD	A	C	Nom. Wall
	1 1/2 x 1	2.500	1.000	0.065
	2 x 1 1/2	2.500	1.500	0.065
	2 1/2 x 1 1/2	4.500	1.500	0.065
	2 1/2 x 2	2.500	2.000	0.065
	3 x 2	4.500	2.000	0.065
	3 x 2 1/2	2.500	2.500	0.065
	4 x 2	8.625	2.000	0.065
	4 x 2 1/2	6.625	2.500	0.065
	4 x 3	4.625	3.000	0.065
	6 x 4	6.375	4.000	0.083

Weld Fittings

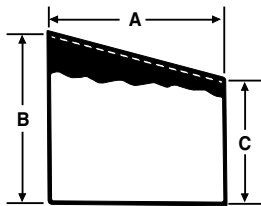
STAINLESS STEEL FITTINGS PRODUCT CATALOG

E31PW - CONCENTRIC REDUCER PLAIN BEVEL X WELD



Size Tube OD	A	C	Nom. Wall
1 1/2 x 1	2.687	1.000	0.065
2 x 1 1/2	2.718	1.500	0.065
2 1/2 x 1 1/2	4.843	1.500	0.065
2 1/2 x 2	2.843	2.000	0.065
3 x 2	4.937	2.000	0.065
3 x 2 1/2	2.937	2.500	0.065
4 x 2	9.000	2.000	0.065
4 x 2 1/2	7.000	2.500	0.065
4 x 3	5.000	3.000	0.065

E32WW - ECCENTRIC REDUCER / LA-E32WW - ECCENTRIC REDUCER



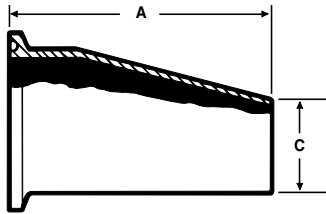
Size Tube OD A	B	C	Nom. Wall	
[LA] 3/4 x 1/2	*	0.750	0.500	0.065
[LA] 1 x 1/2	*	1.000	0.500	0.065
[LA] 1 x 3/4	*	1.000	0.750	0.065
[LA] 1 1/2 x 1/2	*	1.500	0.500	0.065
[LA] 1 1/2 x 3/4	*	1.500	0.750	0.065
[LA] 1 1/2 x 1	2.000	1.500	1.000	0.065
1 1/2 x 1 1/4	1.000	1.500	1.250	0.065
[LA] 2 x 1	4.000	2.000	1.250	0.065
2 x 1 1/4	3.000	2.000	1.250	0.065
[LA] 2 x 1 1/2	2.000	2.000	1.500	0.065
[LA] 2 1/2 x 1 1/2	4.000	2.500	1.500	0.065
[LA] 2 1/2 x 2	2.000	2.500	2.000	0.065
[LA ONLY] 3 X 1	8.000	3.000	1.000	0.065
[LA ONLY] 3 X 1 1/2	6.000	3.000	1.500	0.065
[LA] 3 x 2	4.000	3.000	2.000	0.065
[LA] 3 x 2 1/2	2.000	3.000	2.500	0.065
[LA ONLY] 4 X 1	12.000	4.000	1.000	0.083 x .065
[LA ONLY] 4 X 1 1/2	10.000	4.000	1.500	0.083 x .065
4 x 2	8.000	4.000	2.000	0.083 x .065
4 x 2 1/2	6.000	4.000	2.500	0.083 x .065
4 x 3	4.000	4.000	3.000	0.083 x .065
6 x 2	5.500	6.000	2.000	0.109 x .065
6 x 3	5.500	6.000	3.000	0.109 x .083
6 x 4	5.500	6.000	4.000	0.109 x .083

* Contact VNE for dimensions.

Weld Fittings

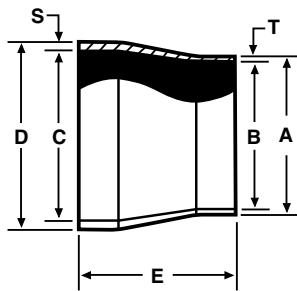
STAINLESS STEEL FITTINGS PRODUCT CATALOG

E32CW - ECCENTRIC REDUCER CLAMP X WELD



Size Tube OD	A	C	Nom. Wall
1 1/2 X 1	2.500	1.000	0.065
2 x 1 1/2	2.500	1.500	0.065
2 1/2 x 1 1/2	4.500	1.500	0.065
2 1/2 x 2	2.500	2.000	0.065
3 x 2	4.500	2.000	0.065
3 x 2 1/2	2.500	2.500	0.065
4 x 2	8.625	2.000	0.065
4 x 2 1/2	6.625	2.500	0.065
4 x 3	4.625	3.000	0.065
6 x 4	6.375	4.000	0.083

E17WW-6L - TUBE X PIPE ADAPTER



Size Tube OD	A	B	SCH5 C	SCH10 C	SCH40 C	D
1/2	0.500	0.370	0.710	0.674	0.622	0.840
3/4	0.750	0.620	0.920	0.884	0.824	1.050
1	1.000	0.870	1.185	1.097	1.049	1.315
1 1/2	1.500	1.370	1.770	1.682	1.610	1.900
2	2.000	1.870	2.245	2.157	2.067	2.375
2 1/2	2.500	2.370	2.709	2.635	2.469	2.875
3	3.000	2.870	3.334	3.260	3.068	3.500
4	4.000	3.834	4.334	4.260	4.026	4.500
6	6.000	5.782	6.407	6.357	6.065	6.625

Size Tube OD	E	T	SCH5 S	SCH10 S	SCH40 S
1/2	1.000	0.065	0.065	0.083	0.109
3/4	1.000	0.065	0.065	0.083	0.113
1	1.000	0.065	0.065	0.109	0.133
1 1/2	1.500	0.065	0.065	0.109	0.145
2	1.500	0.065	0.065	0.109	0.154
2 1/2	1.500	0.065	0.083	0.120	0.203
3	2.000	0.065	0.083	0.120	0.216
4	2.000	0.083	0.083	0.120	0.237
6	3.000	0.109	0.109	0.134	0.280